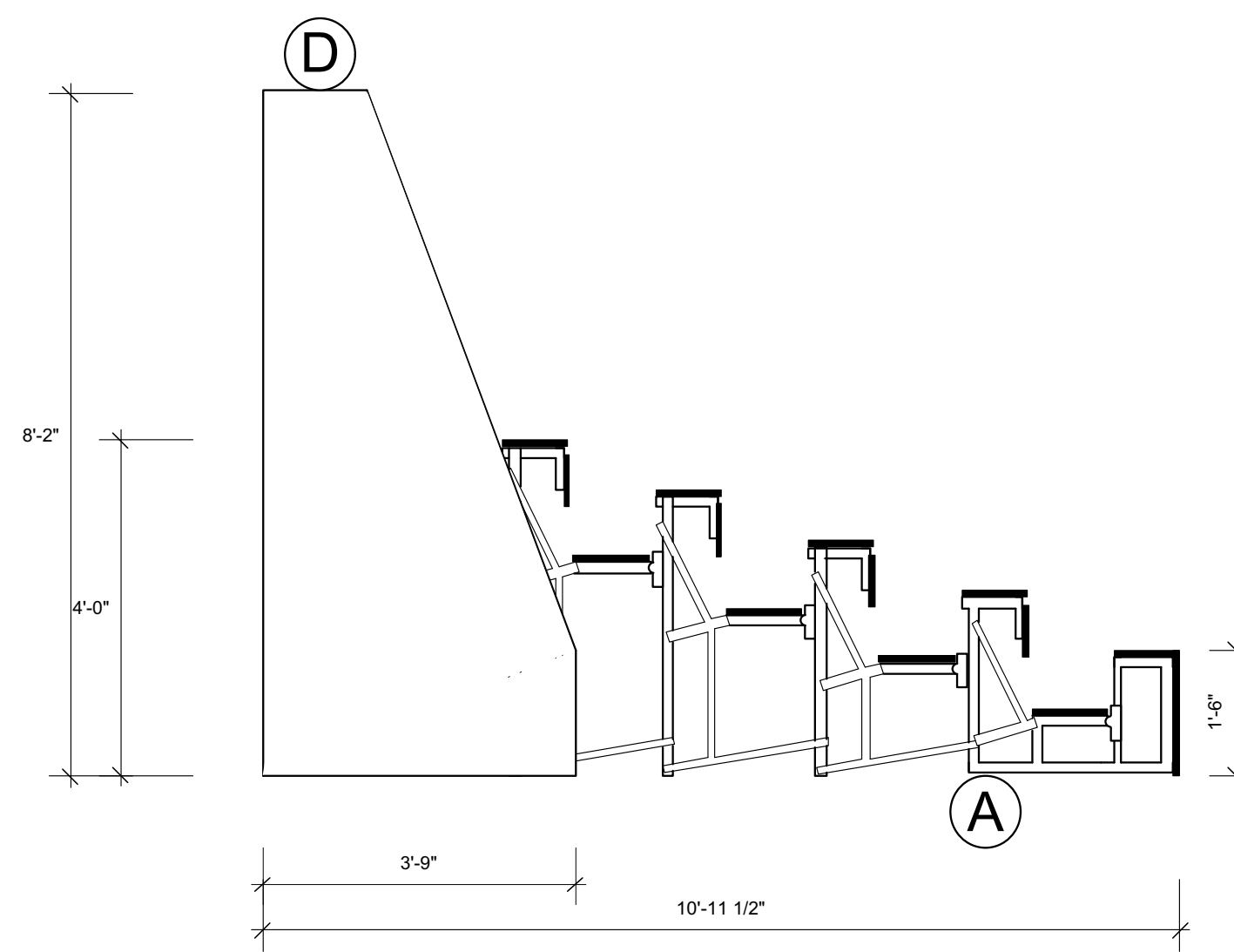
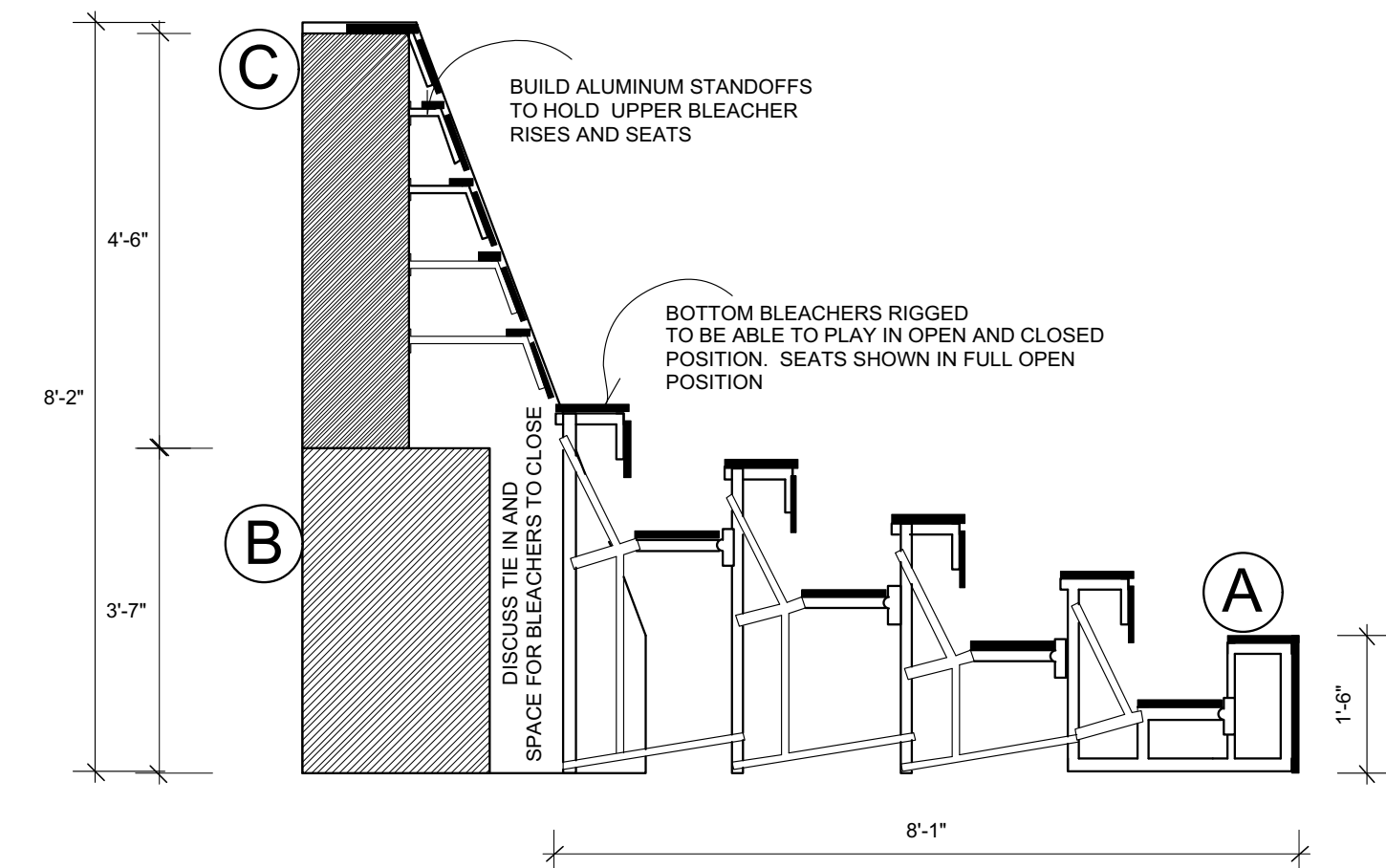


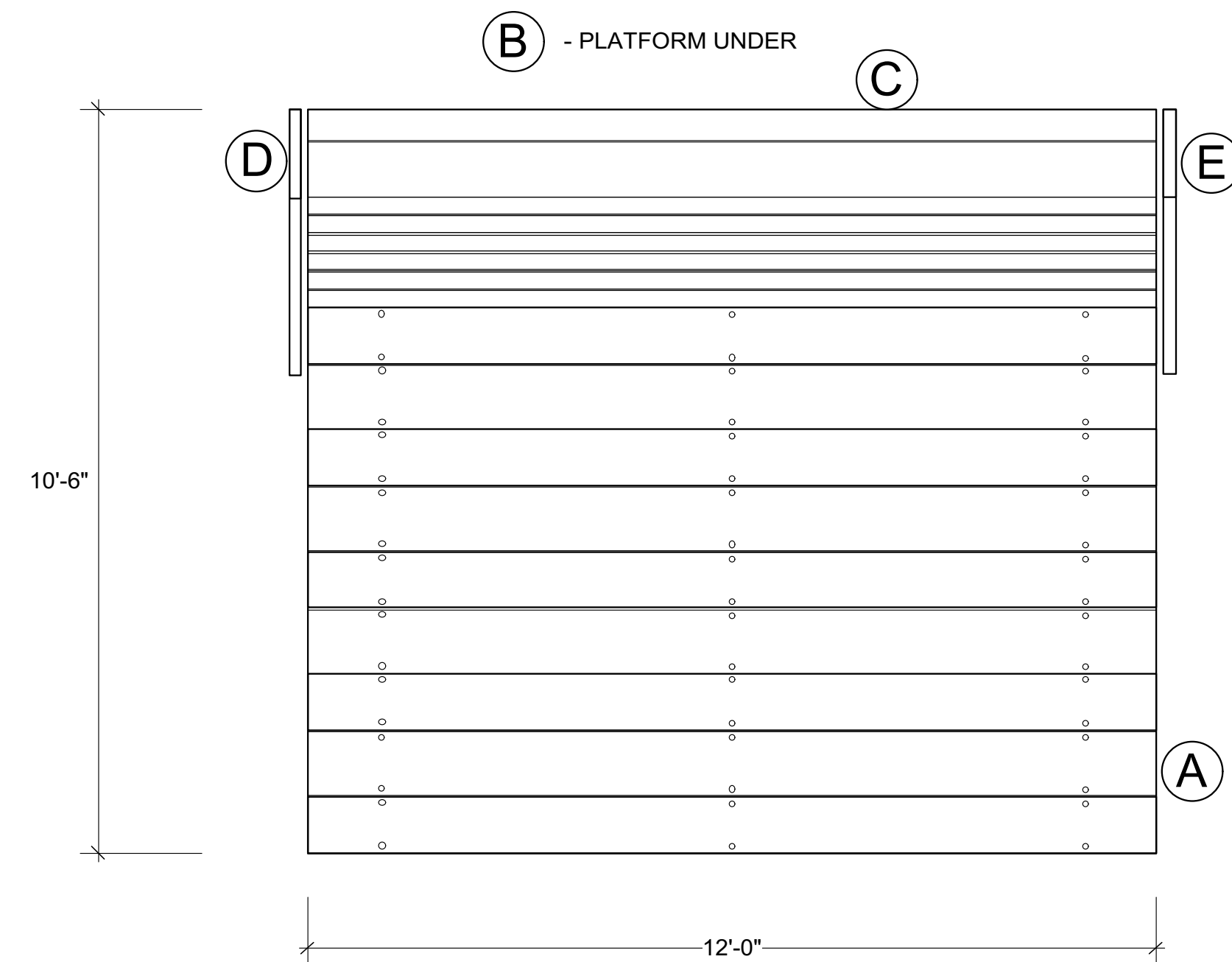
A FRONT BLEACHES
Scale: 1/2" = 1'-0"



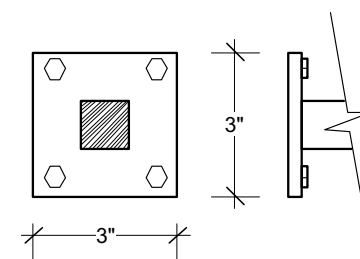
B SIDE BLEACHERS
Scale: 1/2" = 1'-0"



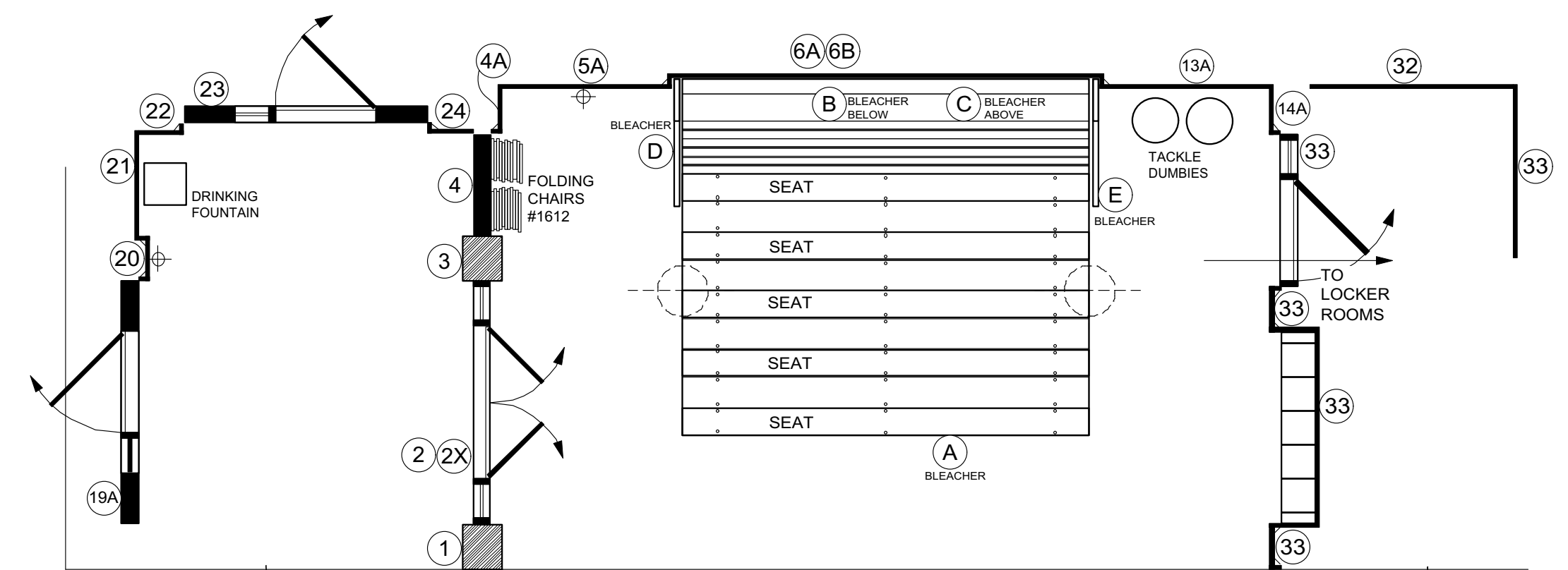
SECTION @ CL
Scale: 1/2" = 1'-0"



C TOP VIEW BLEACHERS
Scale: 1/2" = 1'-0"



D1 STAND OFF PLATE
Scale: 3" = 1'-0"



LOVE CENTER AS
HIGH SCHOOL GYM W/ BLEACHERS
Scale: 1/4" = 1'-0"

NOTES:

- * BLEACHERS ARE ABLE TO OPEN AND CLOSE
- * BLEACHERS SHOWN IN "OPEN" POSITION
- * REPAIR DAMAGE TO WOOD AND PAINT TO MATCH
- * LABEL "OLTL LOVE CENTER BLEACHER"

UNION STAMP	AMERICAN BROADCASTING COMPANIES A		DRAWING NO.
	PROD: ONE LIFE TO LIVE	STUDIO TV 17	4
	SET: LOVE CENTER (BEACHERS)		
	SCALE: 1/2" = 1'-0"	DEL. DATE: 11/7/06	OF 4
	DRAWN: 10/25/06	PROD. DATE: 11/8/06	
DESIGNER: ROGER MOONEY		DRAFTSMAN: MARTIN FAHRER	