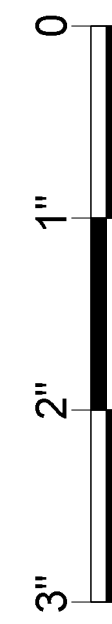


**TECHNICAL PLAN**  
SCALE: 1/2" = 1'-0"



TRUE SIZE SCALE CHECK

101\_113\_Gretel's Condo Bathroom\_Elevation.vwx



**REVISED SHOWER AND TUB SECTION FINISHED**

**REVISED 03/20/2019**

Episode: <b>101</b>	Drawing Date: <b>3/20/2019</b>	Drawn by: <b>M. FAHRER</b>
Set #: <b>113</b>	Shoot Date: <b>03/28/2019</b>	Sheet No.: <b>101 01</b>
Scale: <b>1/2"=1'-0"</b>		

Set Name & Description: **GRETEL'S BATHROOM - TECHNICAL PLAN**

Director: **VARIOUS**

Location: **STAGE 28**

Producer: **JERRY KUPFER**

UPM: **BILL SELL**

Address: **STEINER STUDIO, 15 WASHINGTON AVE**

Art Director: **MARCI MUDD**

Const. Coordinator: **NILES NORTON**

Exec Producer: **NIKKI TOSCANO**

Line Producer: **BILL SELL**

Prod Designer: **CURT BEECH**

Set Decorator: **SUSAN MARSHAL**

REVISED: TILE WITH TUB AND SHOWER REVISED 03/20/2019

Episode: 101  
Set #: 113  
Scale: 1/2"=1'-0"

Drawing Date: 3/20/2019  
Shoot Date: 03/28/2019  
Drawn by: M. FAHRER  
Sheet No.: 101 02

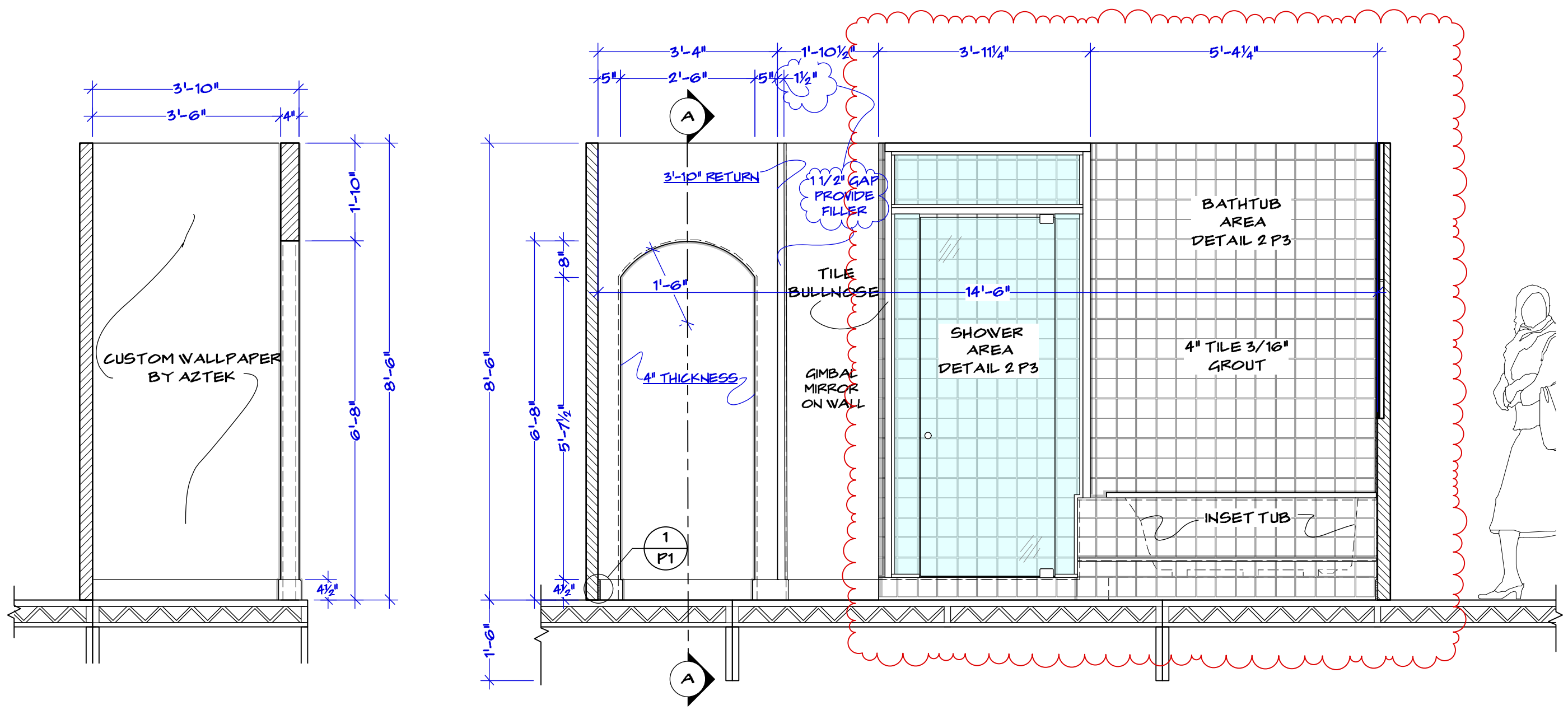
Set Name & Description: GRETEL'S BATHROOM ELEVATION  
Director: VARIOUS  
Location: STAGE 28

Exec Producer: NIKKI TOSCANO  
Line Producer: BILL SELL  
Address: STEINER STUDIO, 15 WASHINGTON AVE  
Prod. Designer: CURT BEECH  
Set Decorator: SUSAN MARSHAL

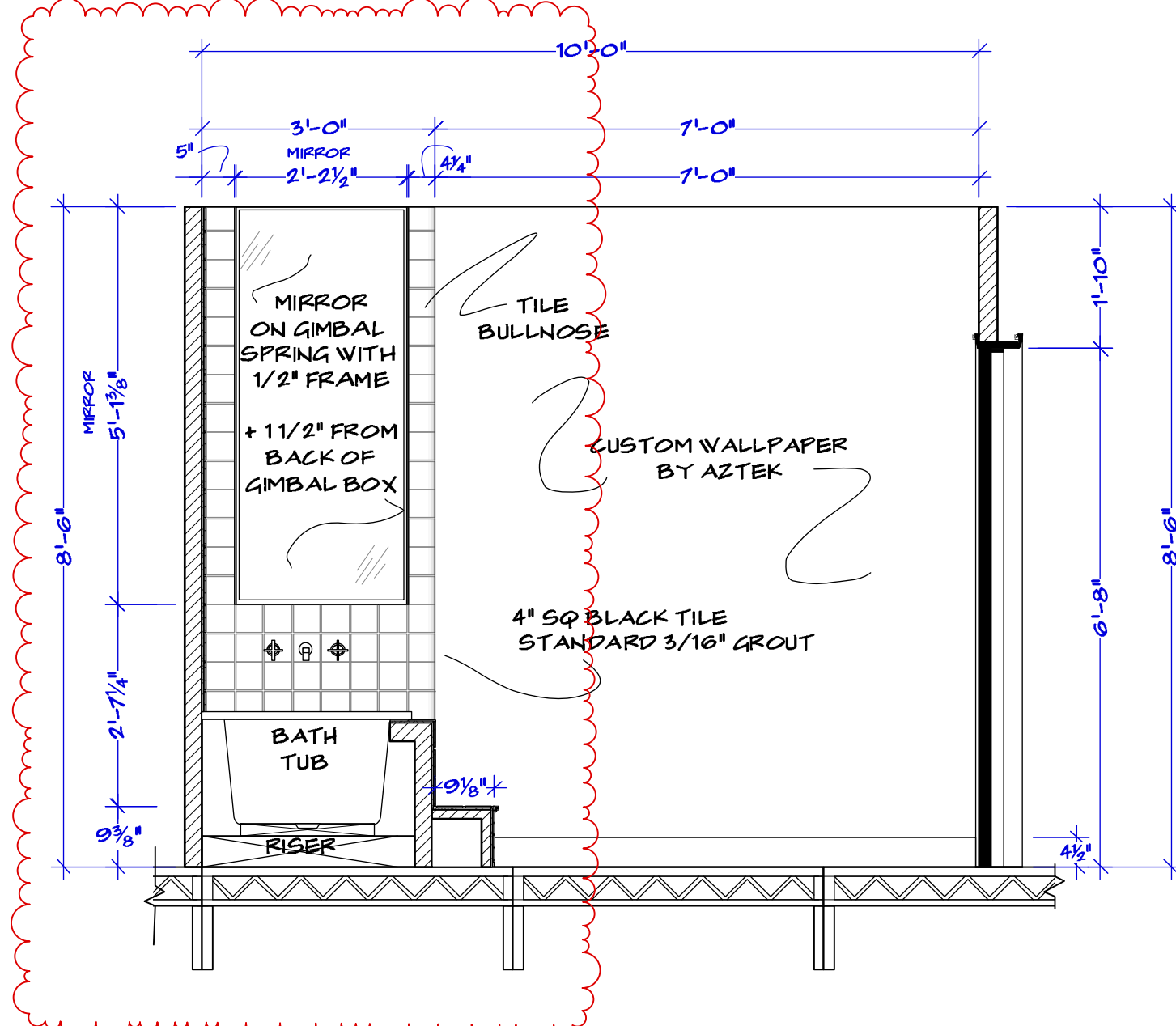
Producer: JERRY KUPFER  
UPM: BILL SELL  
ART Director: MARCI MUDD  
Const. Coordinator: NILES HORTON



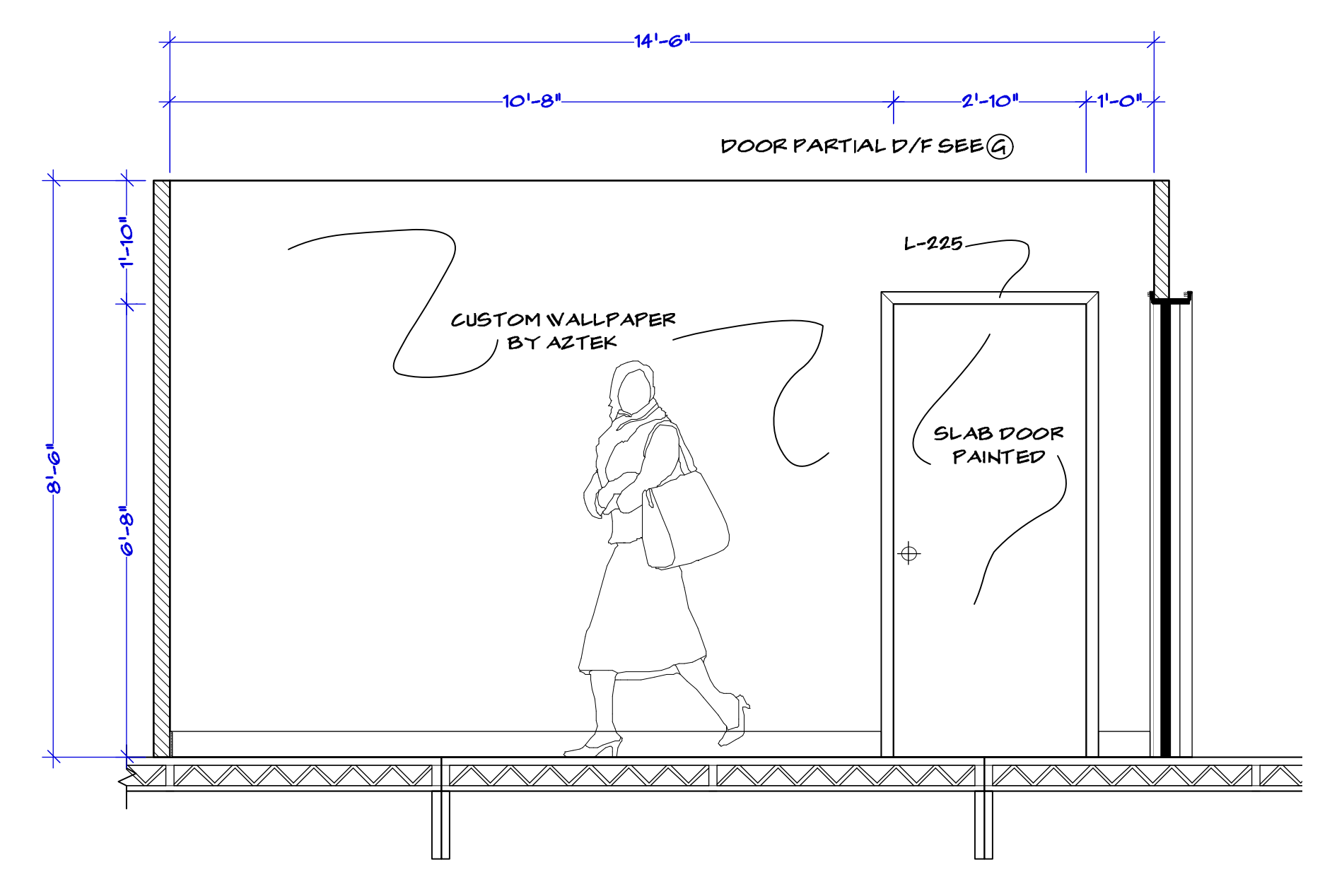
TRUE SIZE SCALE CHECK  
101\_113\_Gretel's Condo Bathroom\_Elevation.vwx



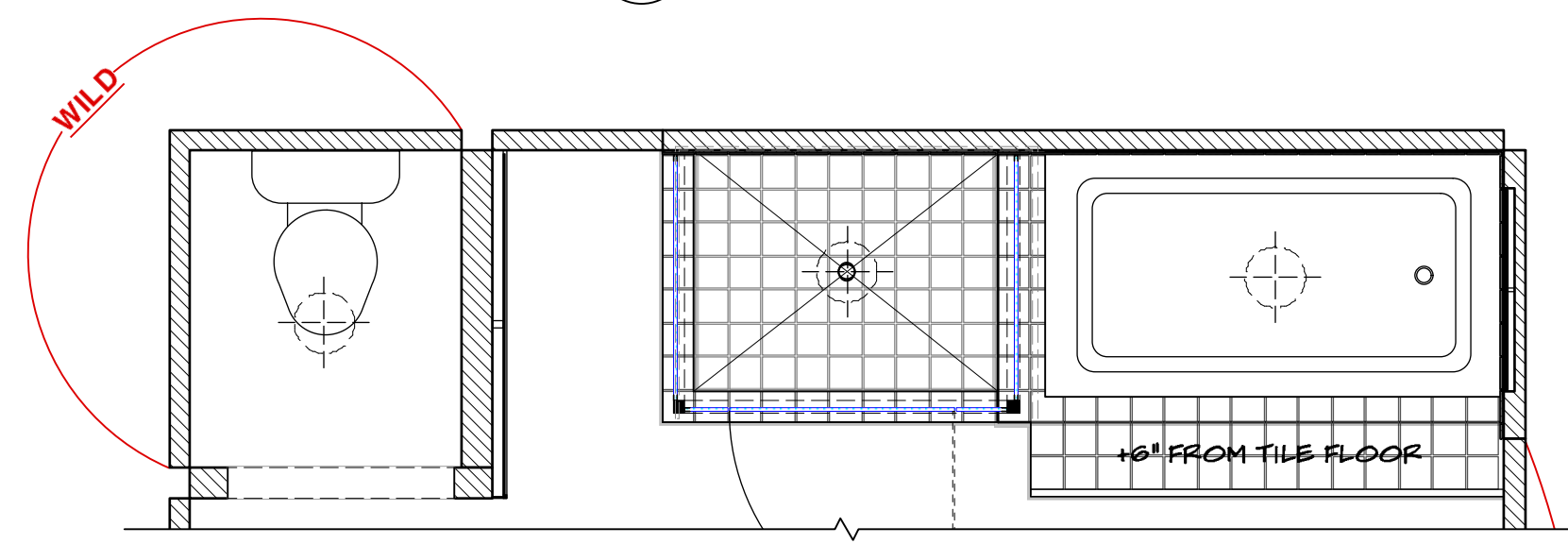
A-A SECTION A-A SCALE: 1/2" = 1'-0"  
A SHOWER WALL ELEVATION SCALE: 1/2" = 1'-0"



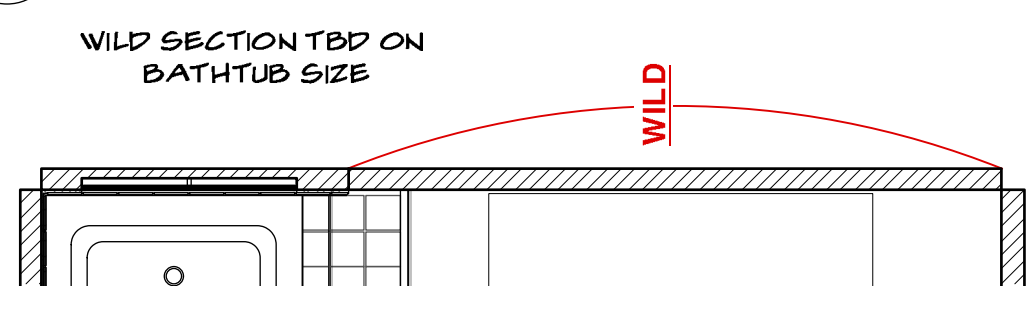
B BATHROOM VANITY WALL ELEVATION SCALE: 1/2" = 1'-0"



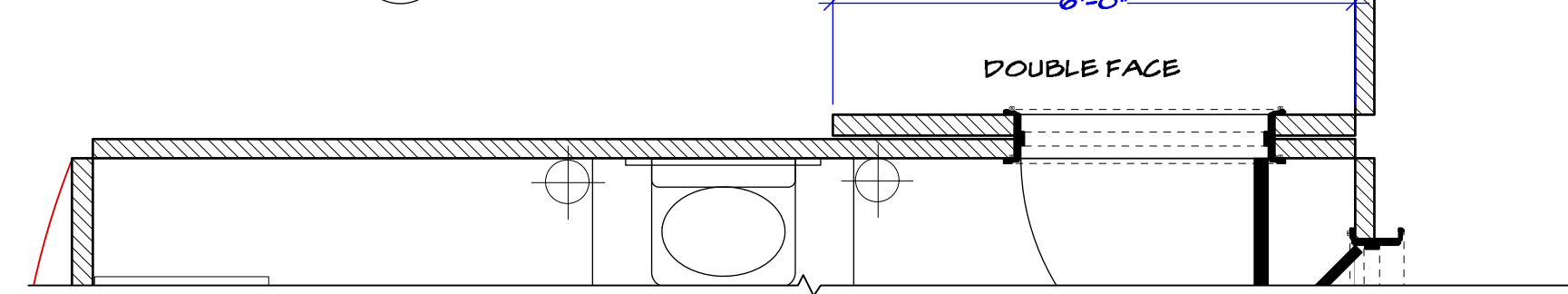
C BATHROOM ENTRANCE ELEVATION SCALE: 1/2" = 1'-0"



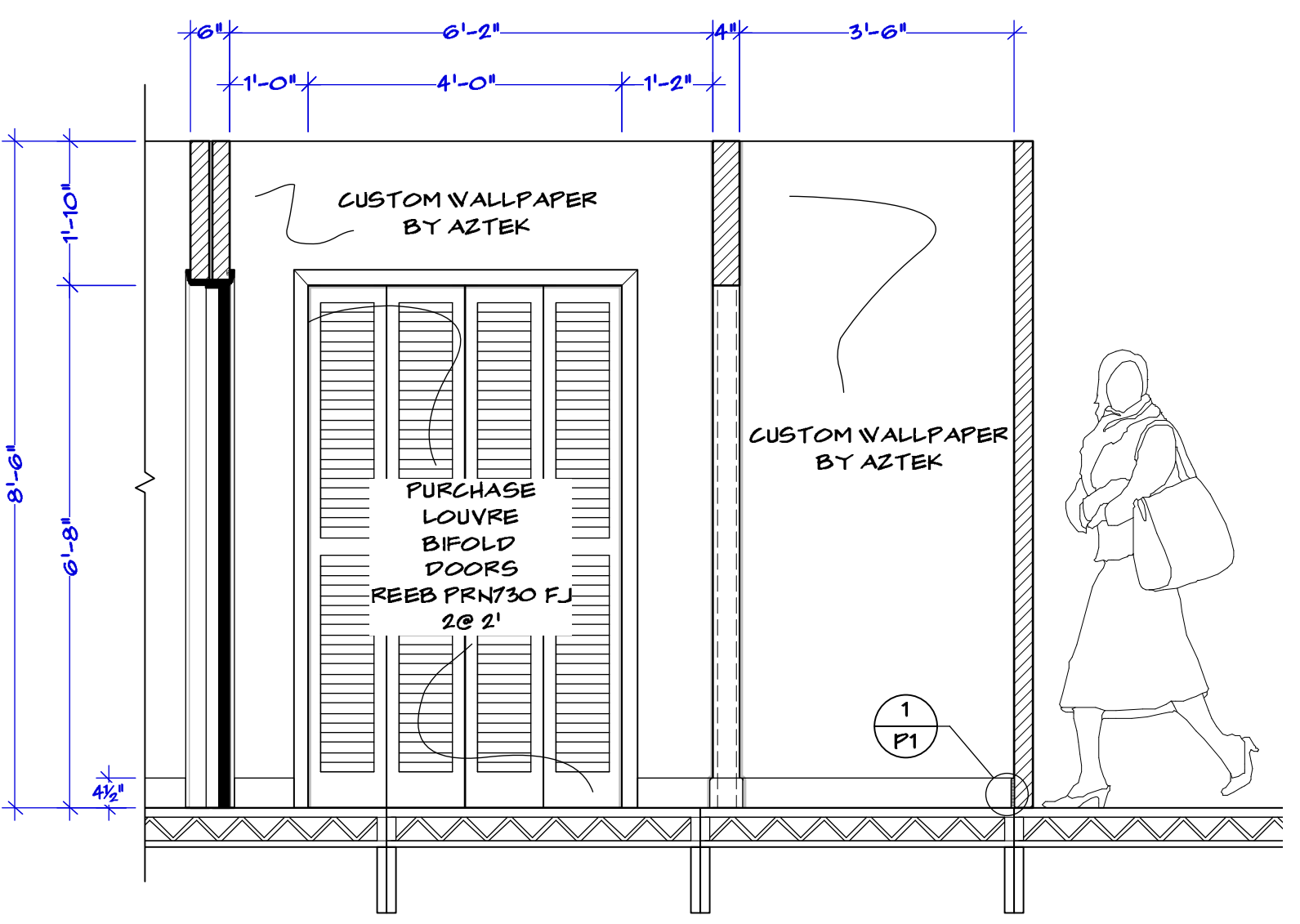
SHOWER WALL PLAN SCALE: 1/2" = 1'-0"



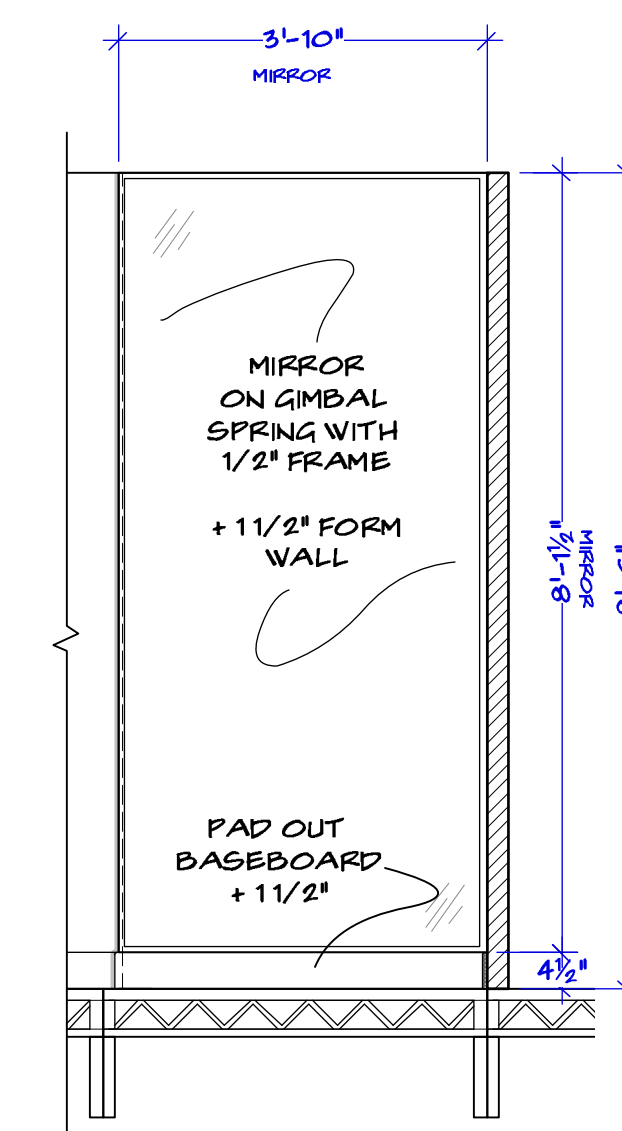
VANITY WALL PLAN SCALE: 1/2" = 1'-0"



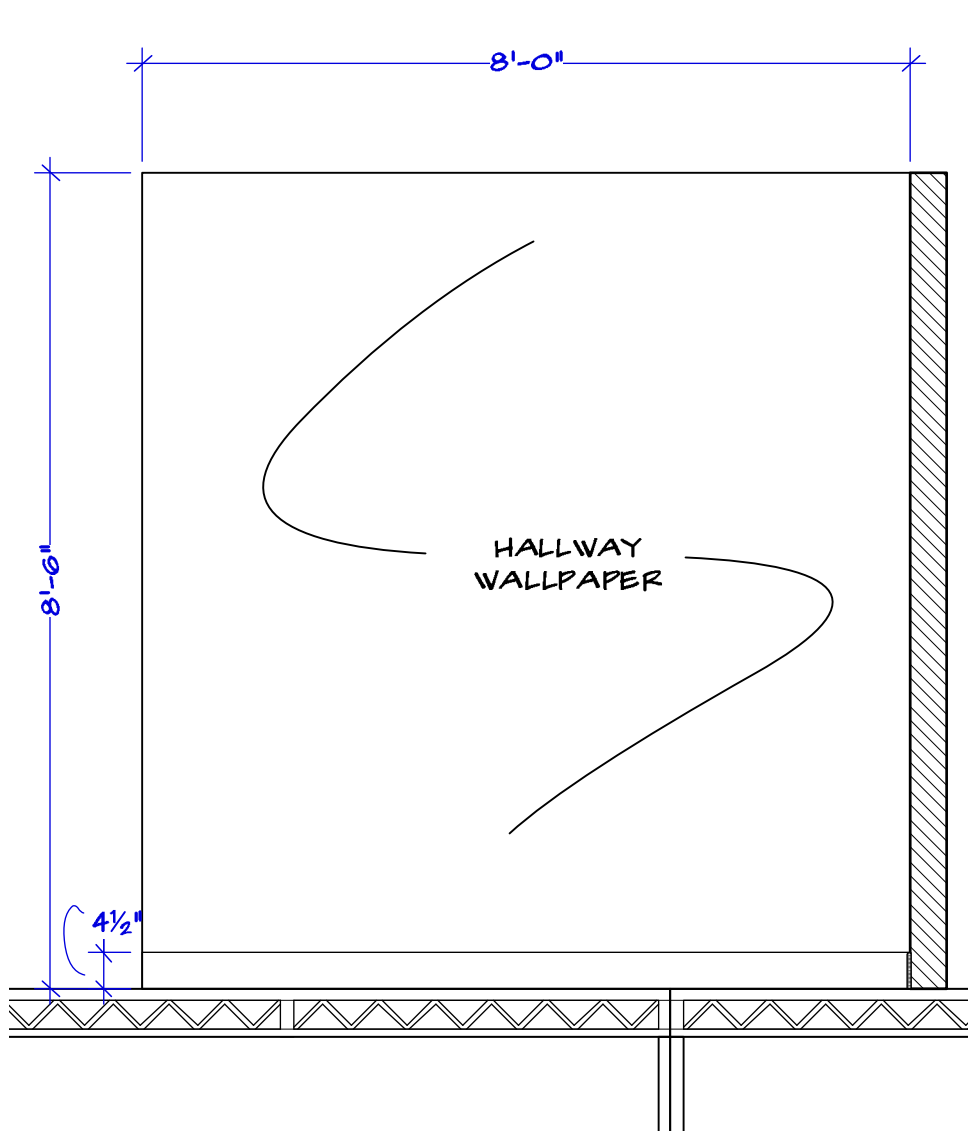
BATHROOM ENTRANCE PLAN SCALE: 1/2" = 1'-0"



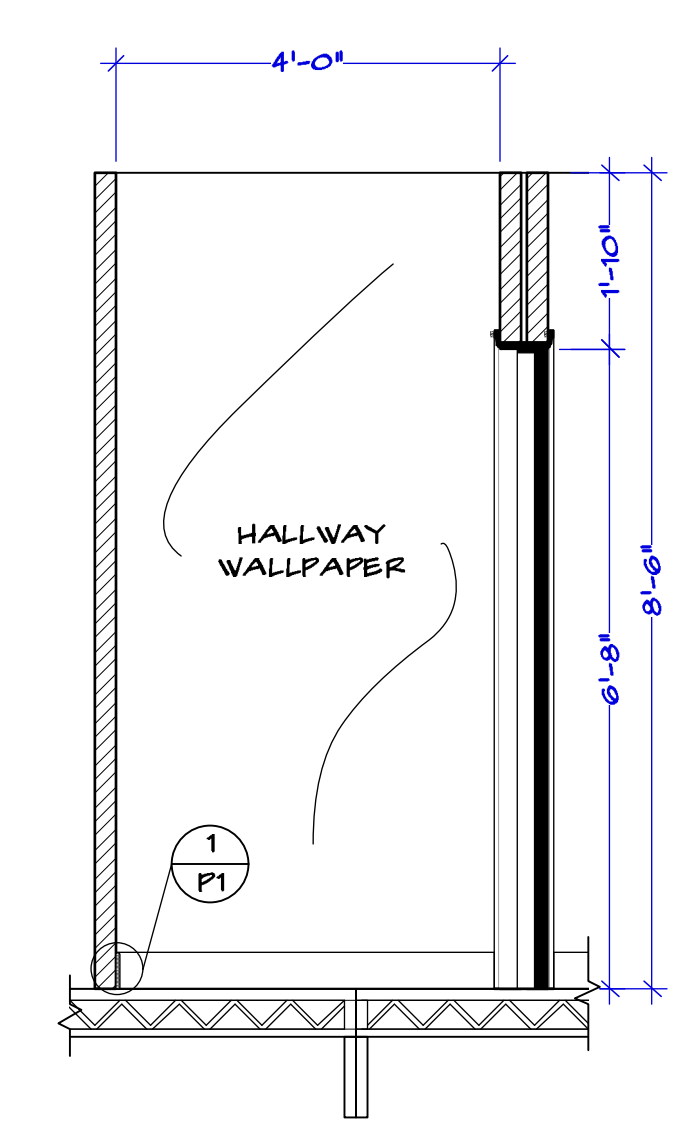
D BATHROOM CLOSET WALL ELEVATION SCALE: 1/2" = 1'-0"



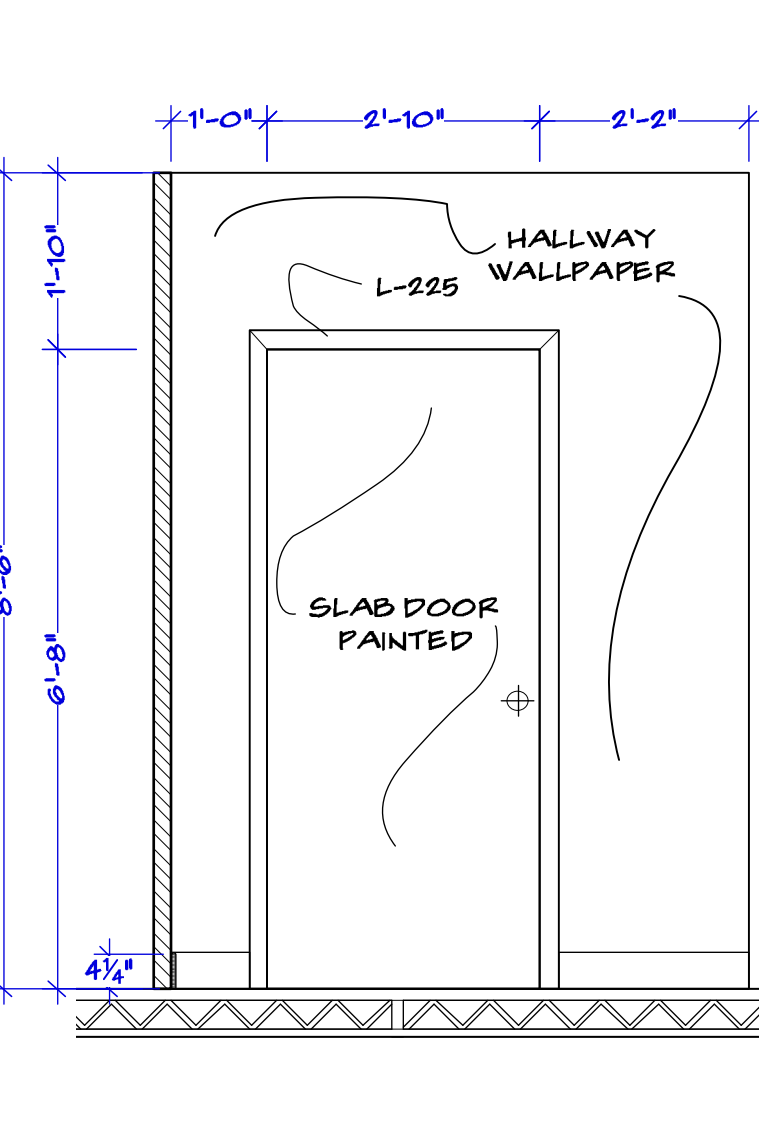
D1 GIMBAL MIRROR UNIT SCALE: 1/2" = 1'-0"



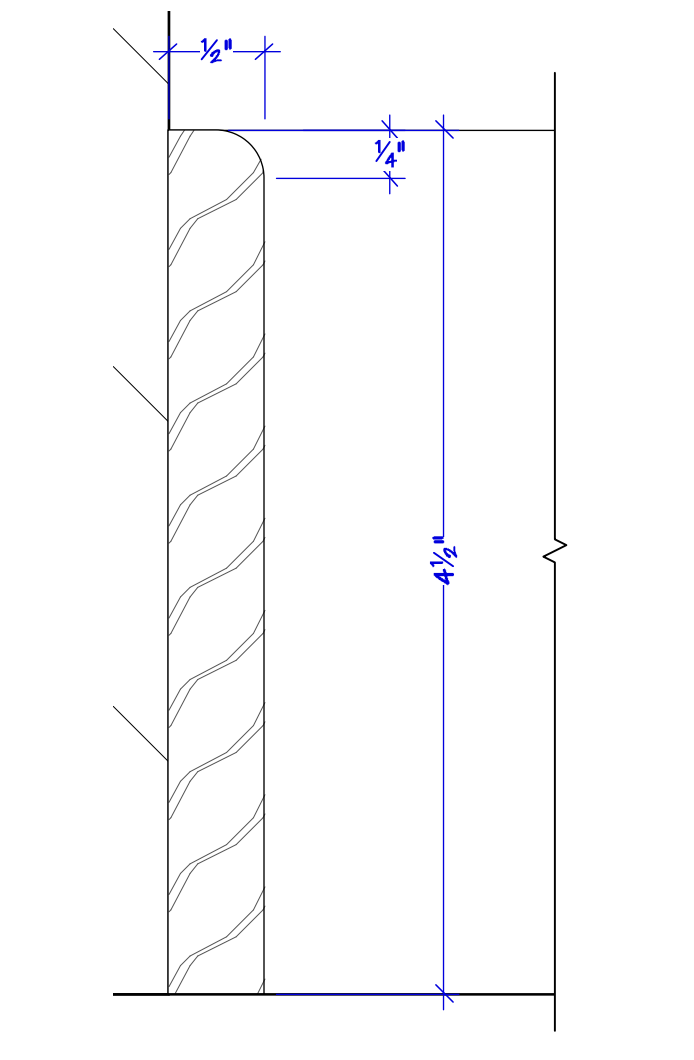
E HALLWAY BACKING SCALE: 1/2" = 1'-0"



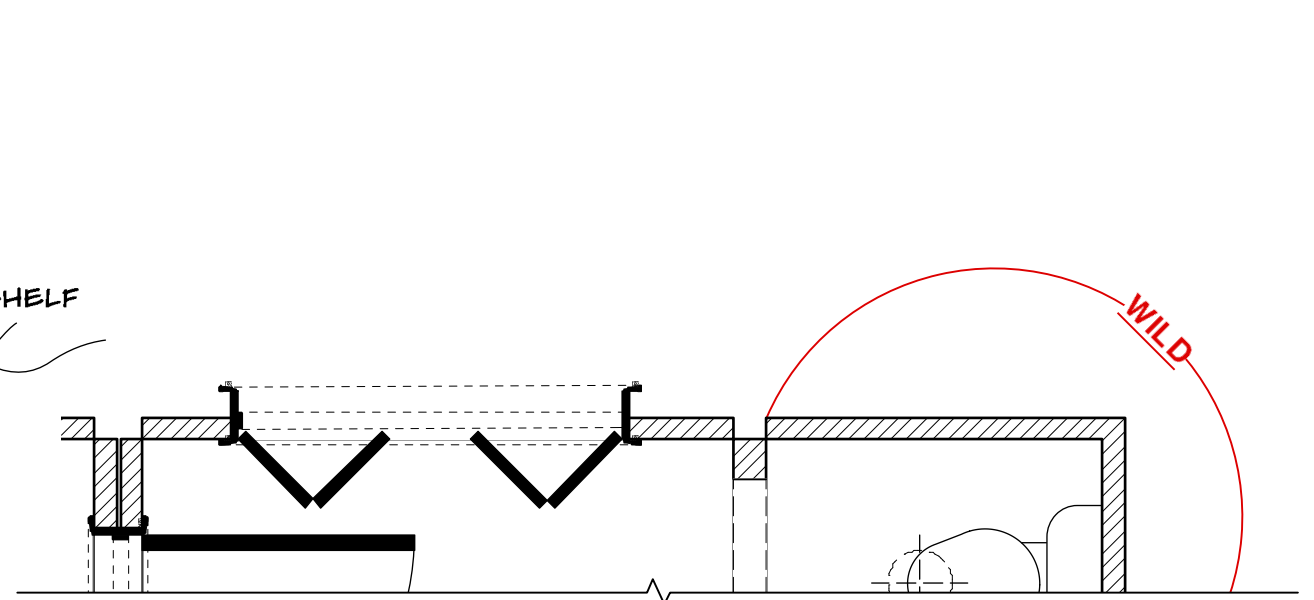
F HALLWAY BACKING SCALE: 1/2" = 1'-0"



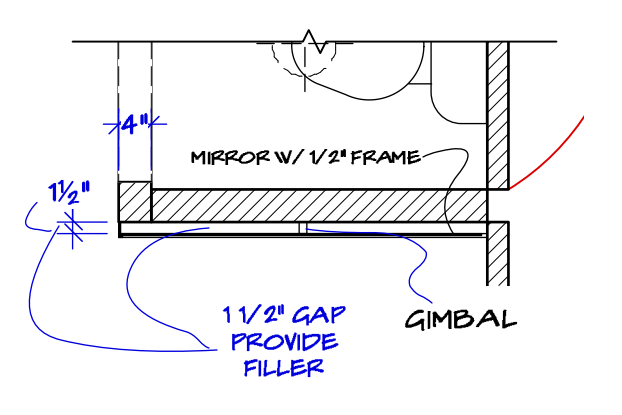
G WALL G ELEVATION SCALE: 1/2" = 1'-0"



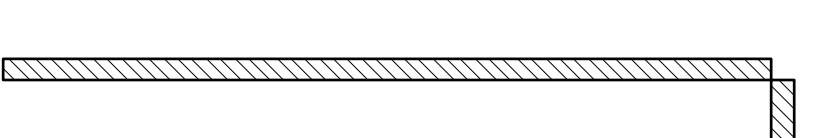
1 BASEBOARD DETAIL SCALE: ACTUAL SIZE



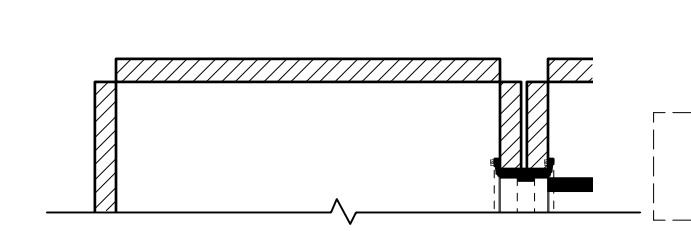
BATHROOM CLOSET PLAN SCALE: 1/2" = 1'-0"



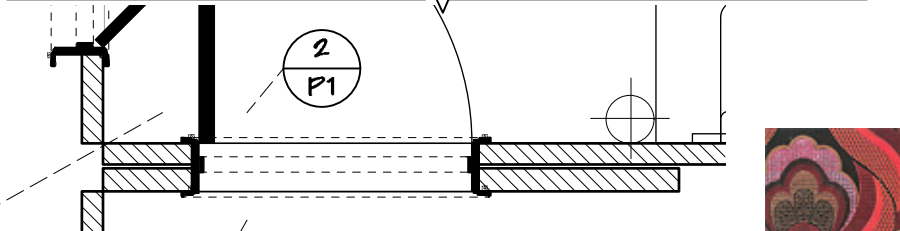
D1 GIMBAL MIRROR WALL SCALE: 1/2" = 1'-0"



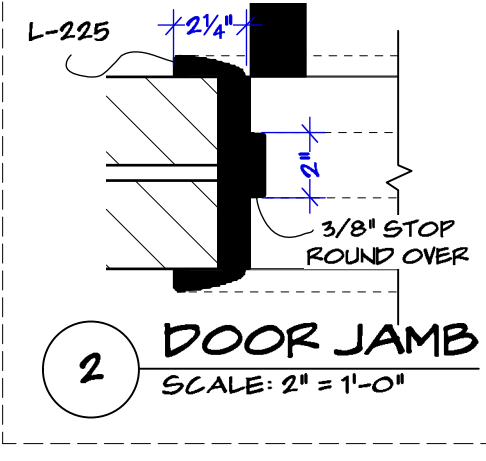
WALL E PLAN SCALE: 1/2" = 1'-0"



WALL F PLAN SCALE: 1/2" = 1'-0"



WALL G PLAN SCALE: 1/2" = 1'-0"



2 DOOR JAMB SCALE: 2" = 1'-0"



AZTEK WALLPAPER



HALLWAY WALLPAPER

TOP ALUMINUM TUBE OF SHOWER FRAME CHANGED TO STOCK NYM 101 1/2" SQ ALUM TUBE  
**REVISED 04/09/2019**

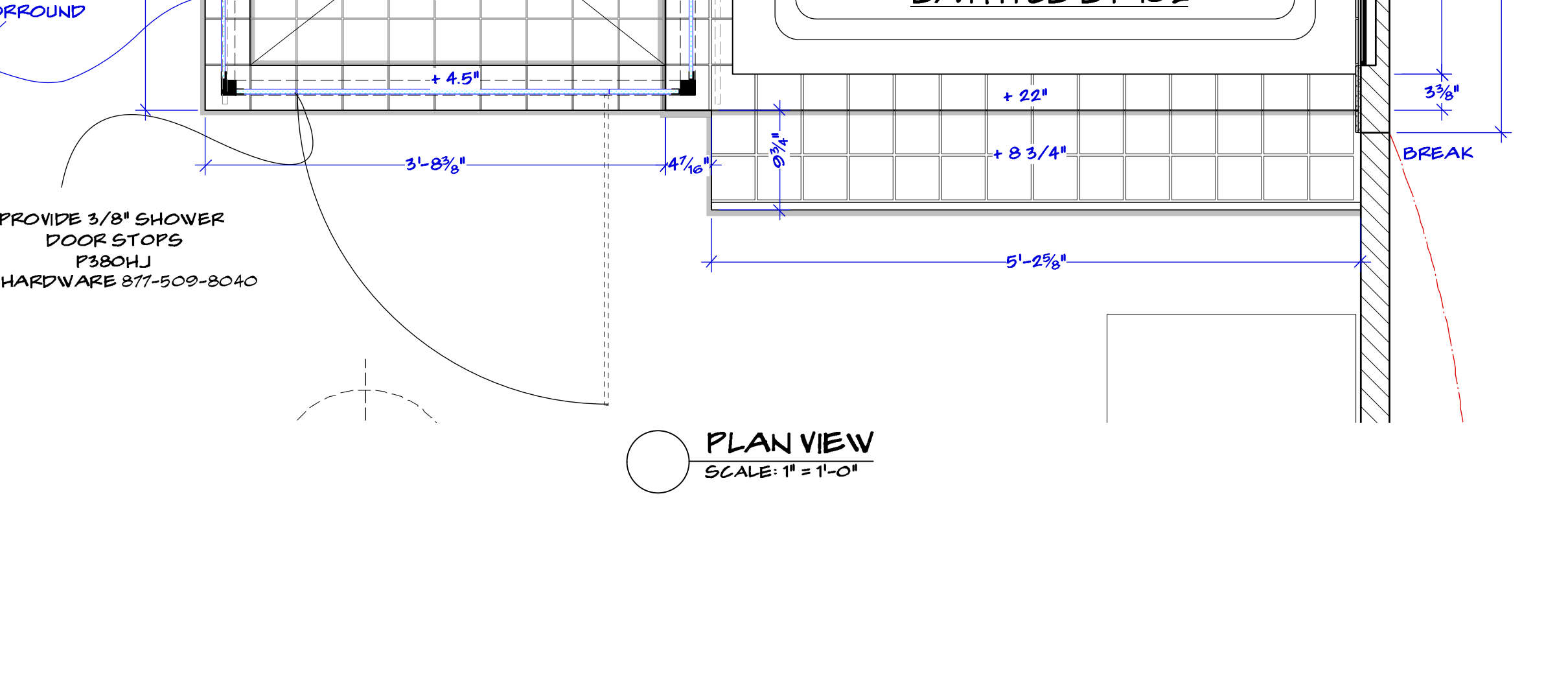
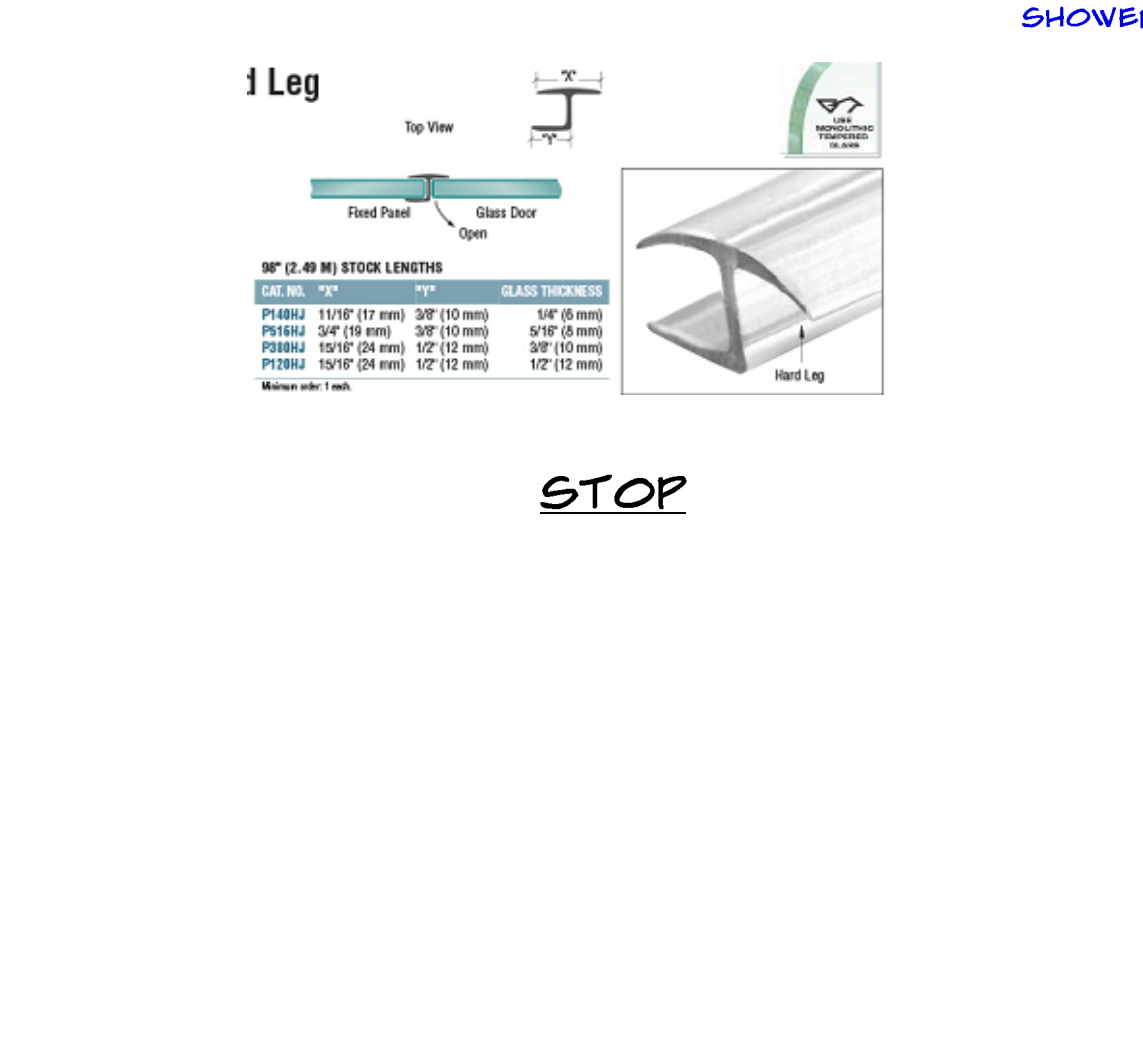
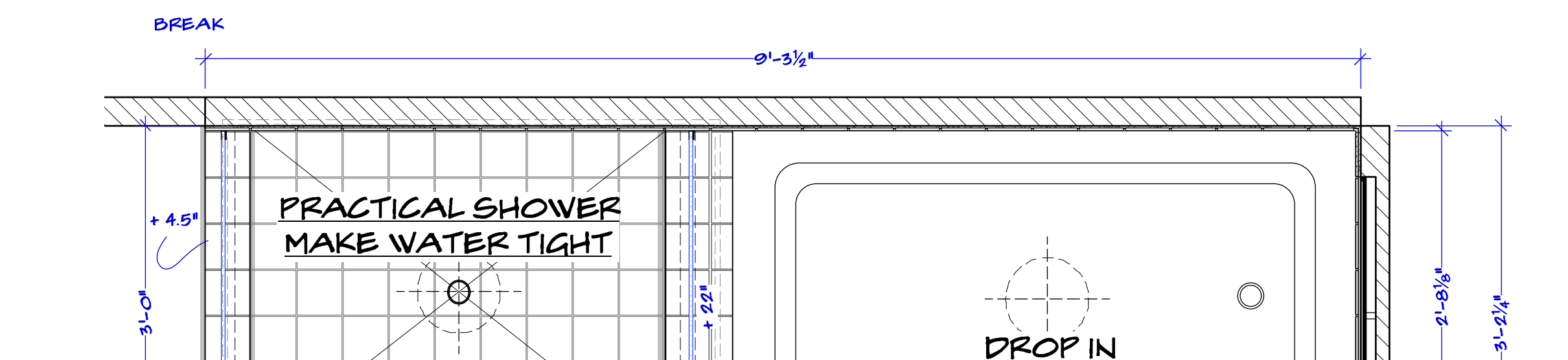
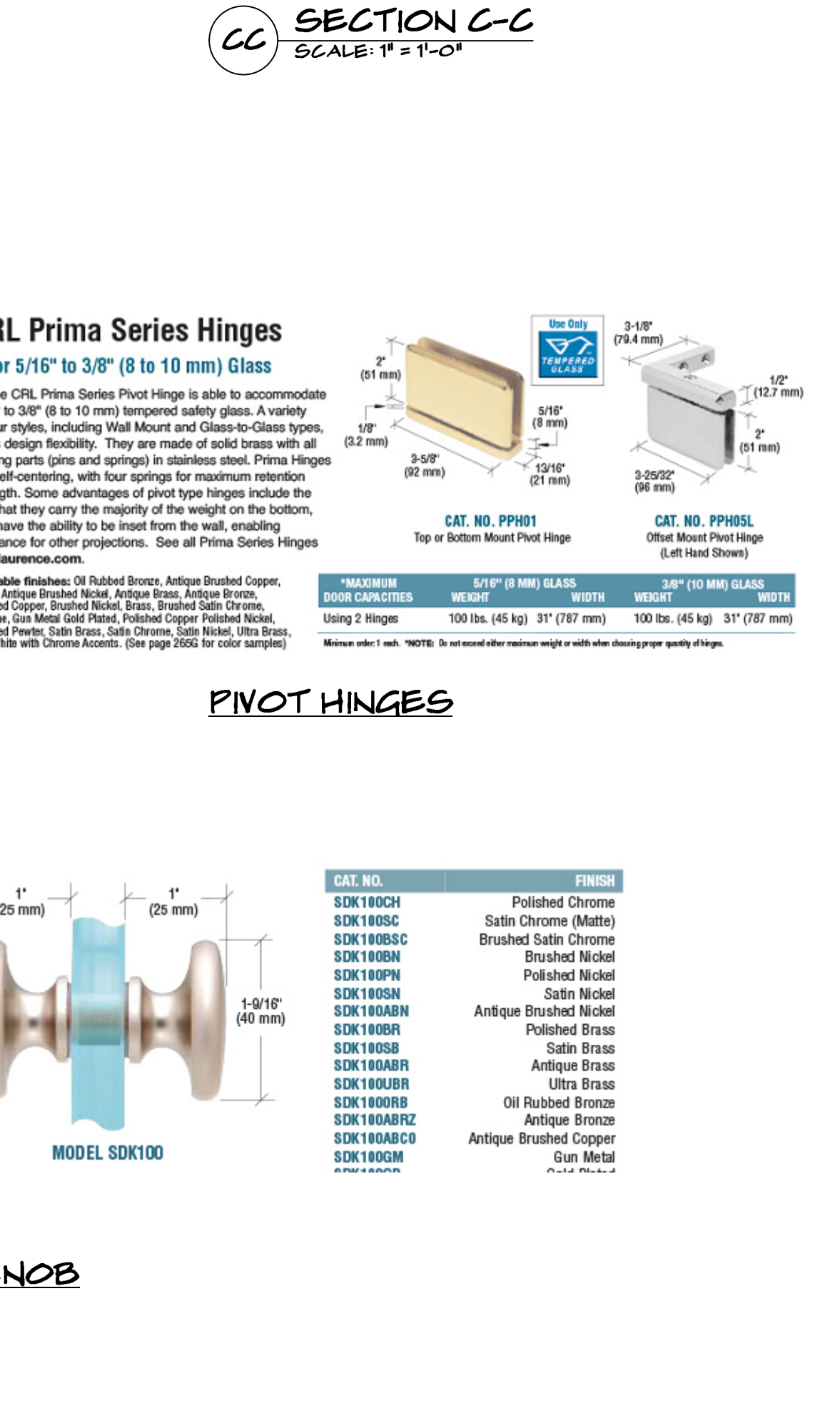
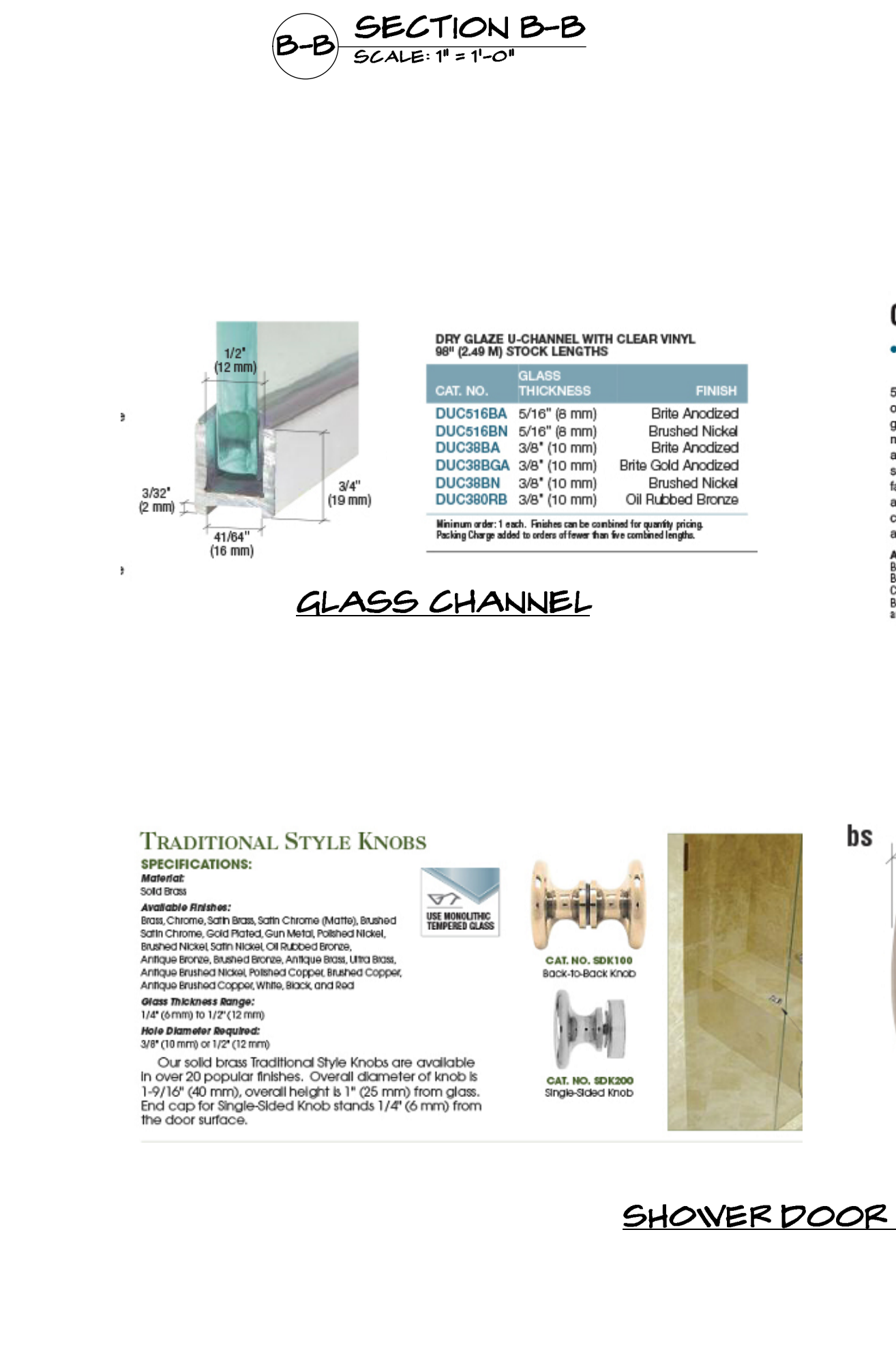
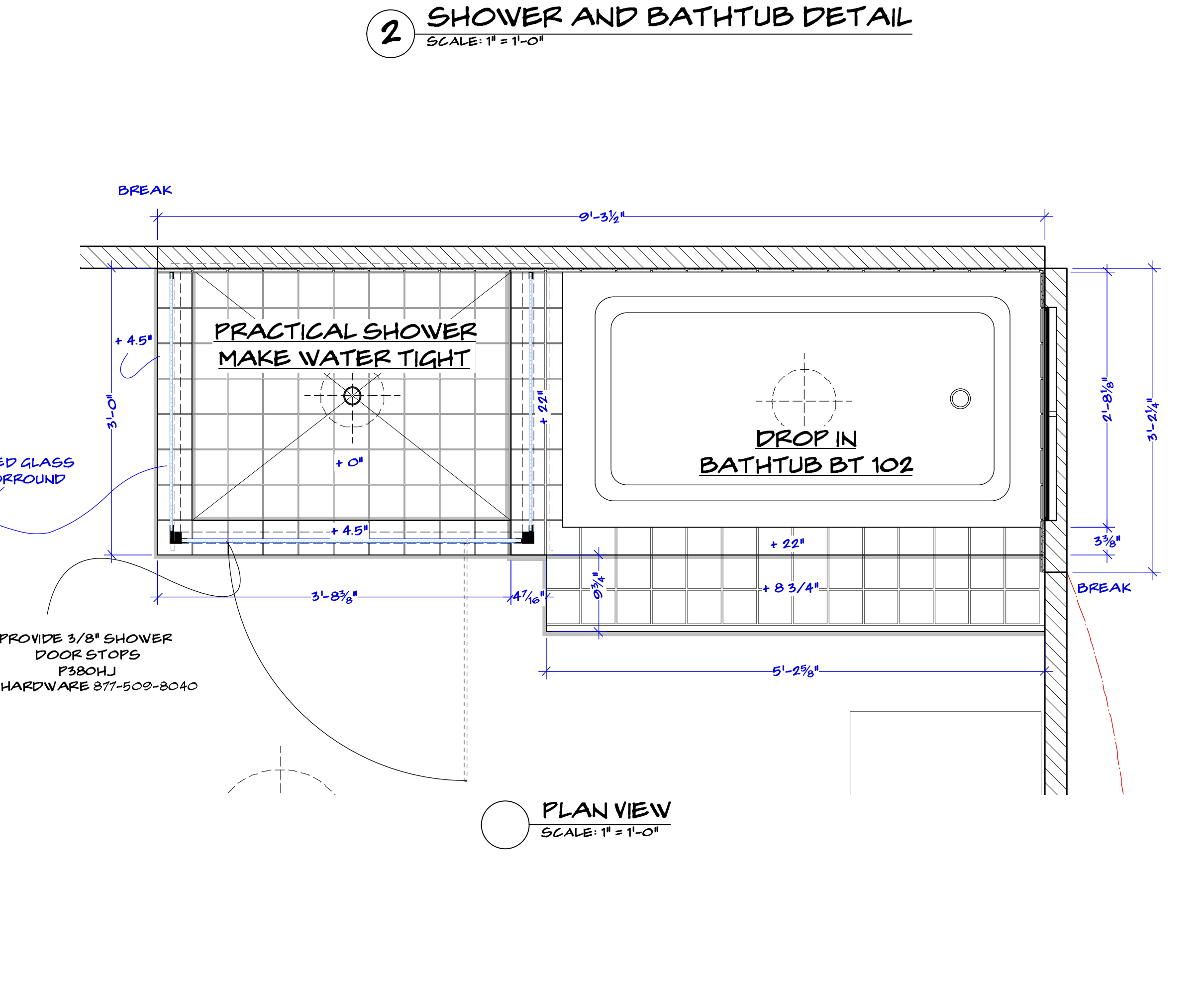
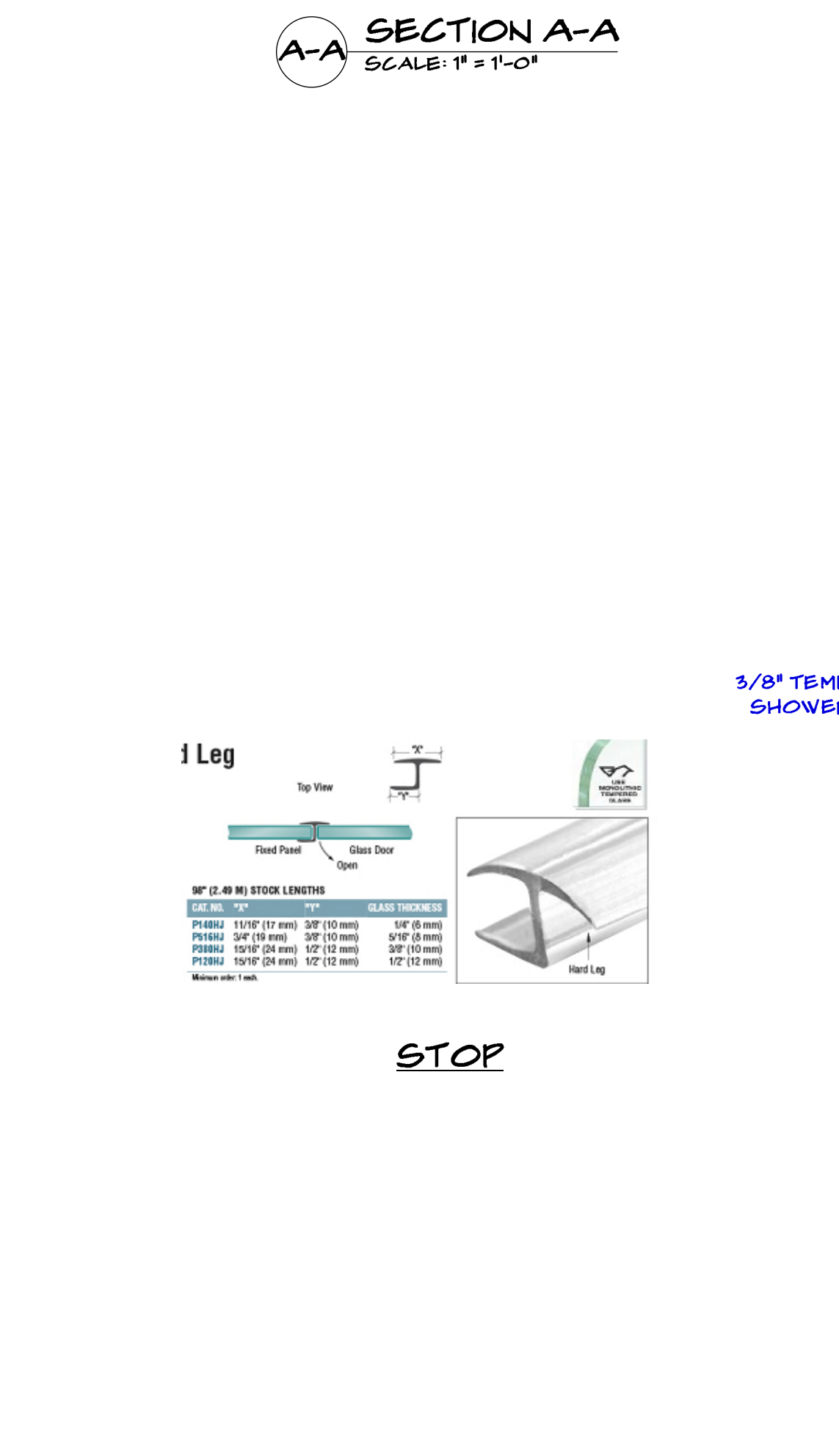
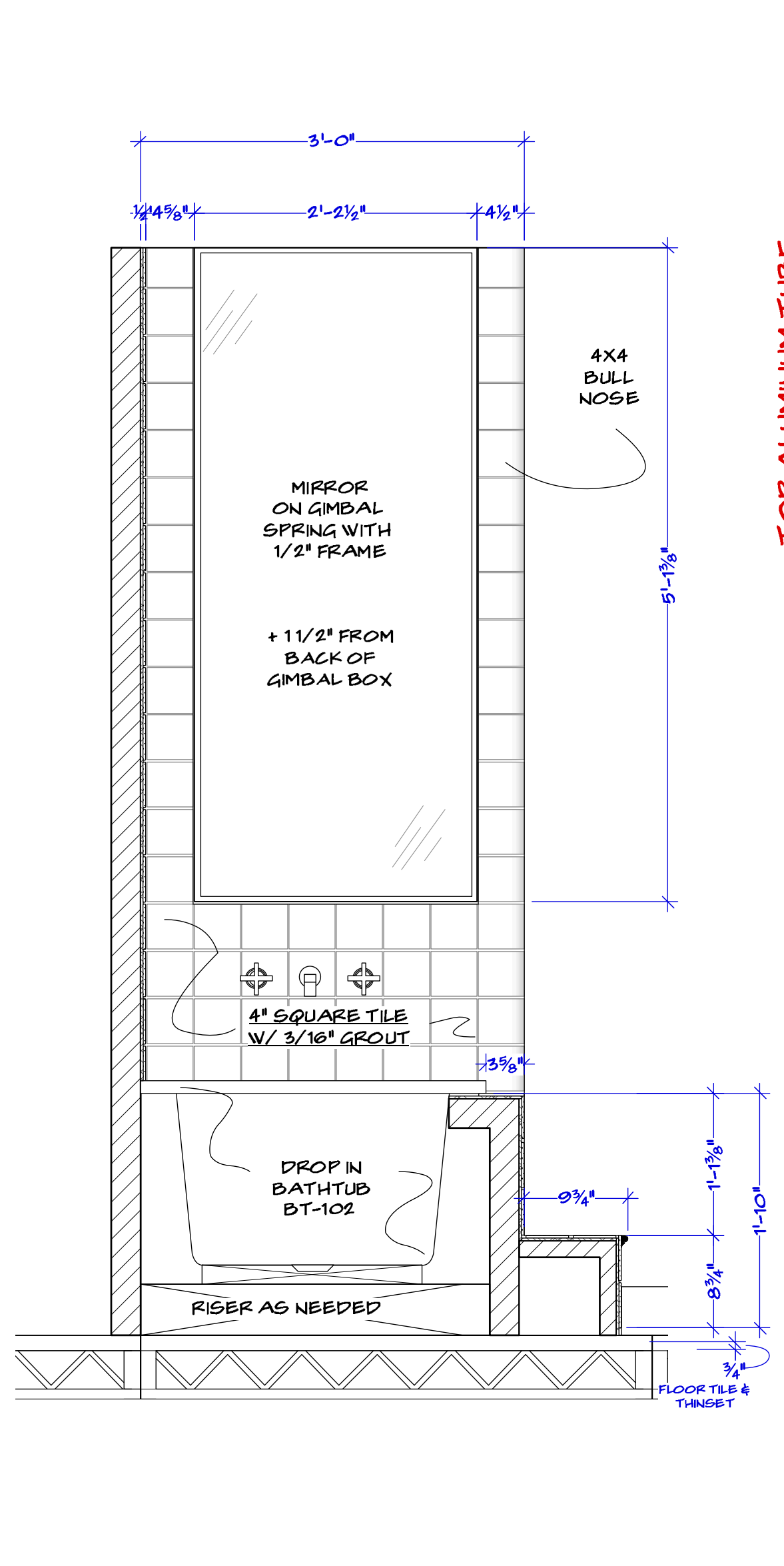
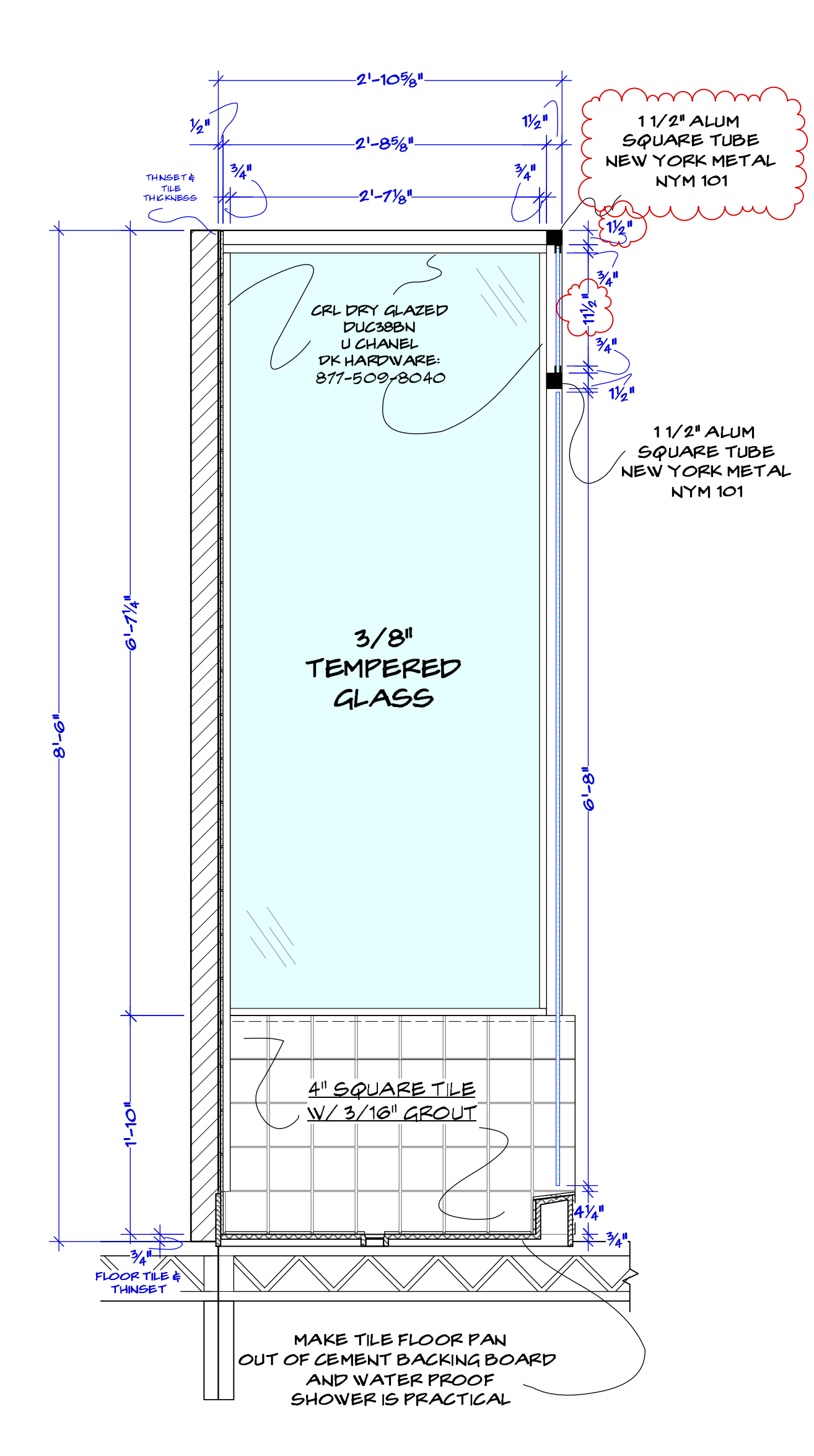
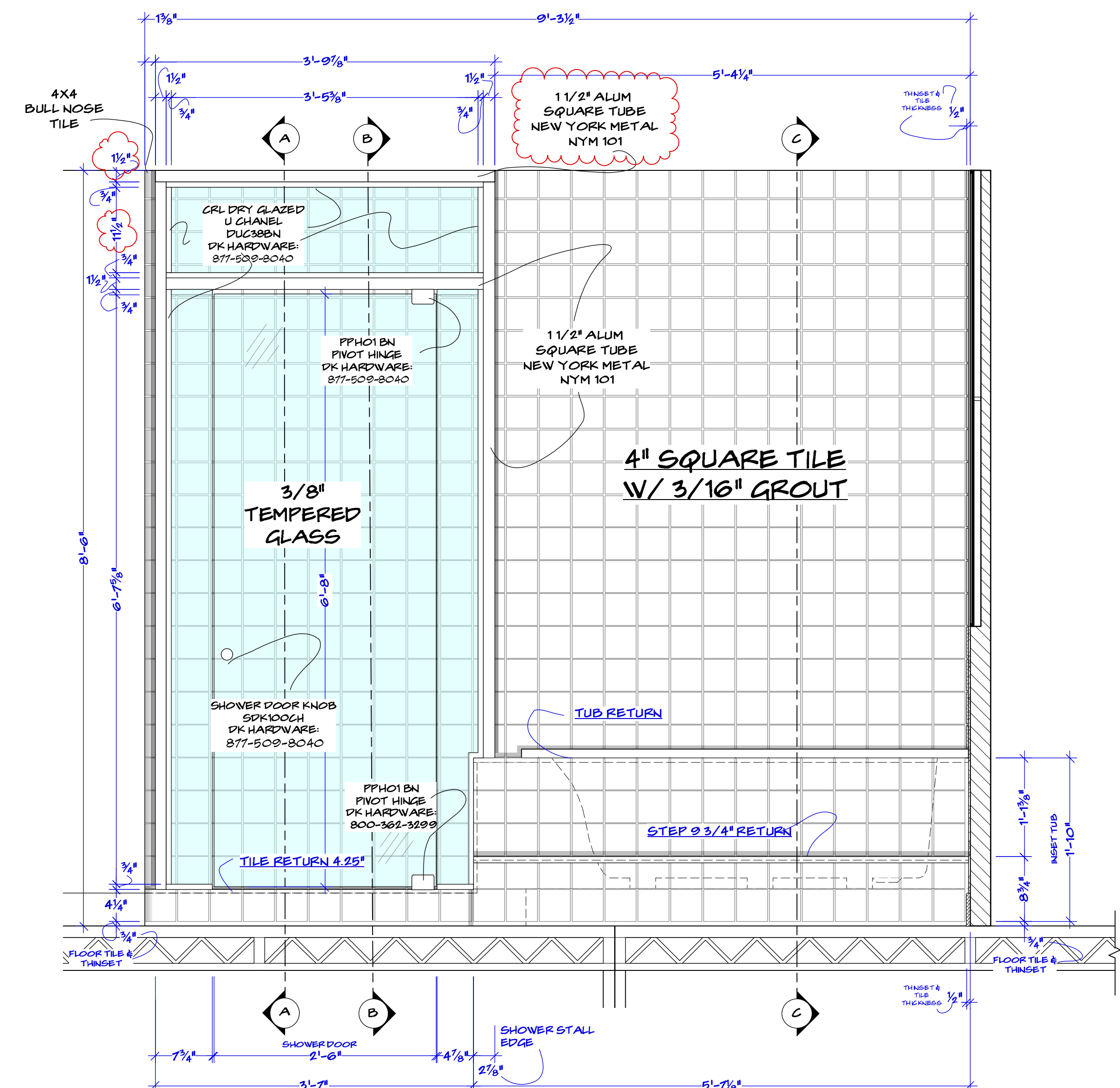
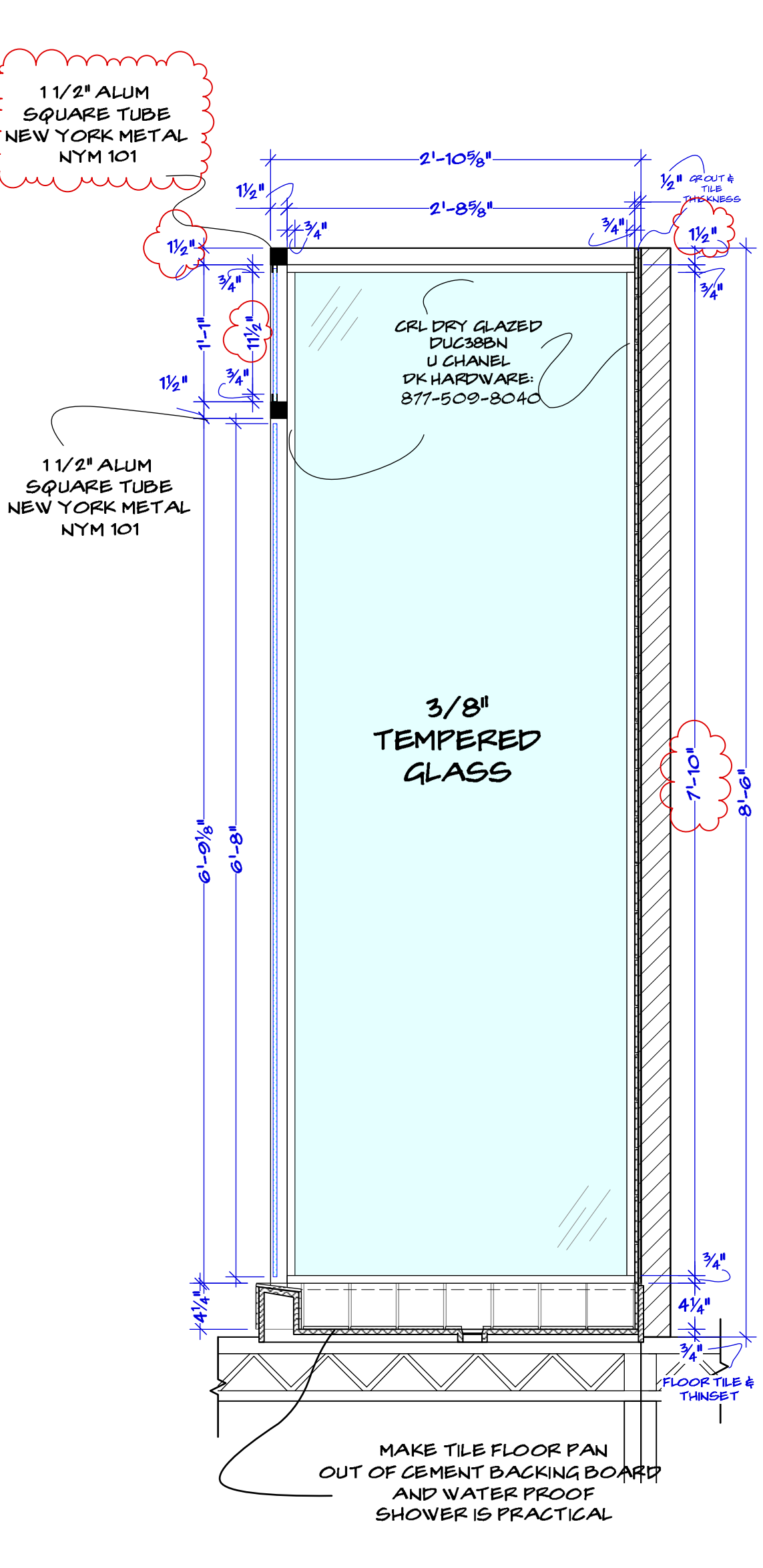
Drawn by: **M. FAHRER**  
 Drawing Date: **4/9/2019**  
 Episode: **101**  
 Set #: **113**  
 Sheet No.: **101 03**  
 Shot Date: **TBD**  
 Scale: **1"=1'-0"**

Set Name & Description: **GRETEL'S BATHROOM DETAILS**  
 Director: **VARIOUS**  
 Location: **STAGE 28**

Executive Producer: **JERRY KUPFER**  
 Producer: **UM: BILL SELL**  
 Line Producer: **BILL SELL**  
 Address: **STEFINER STUDIO, 15 WASHINGTON AVE**  
 Product Designer: **CURT BEECH**  
 Construction Coordinator: **NILES HORTON**

Exec Producer: **NIKKI TOSCANO**  
 Producer: **JERRY KUPFER**  
 Line Producer: **BILL SELL**  
 Address: **STEFINER STUDIO, 15 WASHINGTON AVE**  
 Product Designer: **CURT BEECH**  
 Construction Coordinator: **NILES HORTON**

101-113\_Gretel's Condo Bathroom\_Elevation.vwx  
**THE HUNT**



**DRY GLAZE U-CHANNEL WITH CLEAR VINYL**  
 60" (2.49 M) STOCK LENGTHS

CAT. NO.	GLASS THICKNESS	FINISH
DUC16BA	5/16" (8 mm)	Brill Anodized
DUC16BN	5/16" (8 mm)	Brushed Nickel
DUC38BA	3/8" (10 mm)	Brill Anodized
DUC38BA	3/8" (10 mm)	Brill Gold Anodized
DUC38BN	3/8" (10 mm)	Brushed Nickel
DUC38BN	3/8" (10 mm)	Oil Rubbed Bronze

Minimum order 1 each. Finish can be specified for quantity pricing. Facing Charge added to orders of less than the specified lengths.

**TRADITIONAL STYLE KNOBS**  
 SPECIFICATIONS:  
 Material: Solid Brass  
 Available Finishes: Satin Chrome, Satin Brass, Satin Chrome (Matte), Brushed Satin Chrome, Brushed Copper, Brushed Nickel, Brass, Brushed Satin Chrome, Chrome, Gun Metal Gold Plated, Polished Copper, Polished Nickel, Brushed Pewter, Satin Brass, Satin Chrome, Satin Nickel, Ultra Brass, and White with Chrome Accents. (See page 2005 for color samples)

Our solid brass Traditional Style Knobs are available in over 20 popular finishes. Overall diameter of knob is 1-9/16" (40 mm), overall height is 1" (25 mm) from glass. End caps for Single-Sided knob stands 1/4" (6 mm) from the door surface.

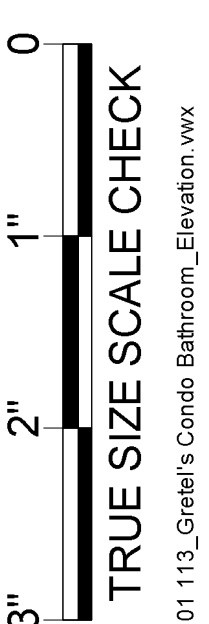
**CRL Prima Series Hinges**  
 • For 5/16" to 3/8" (8 to 10 mm) Glass

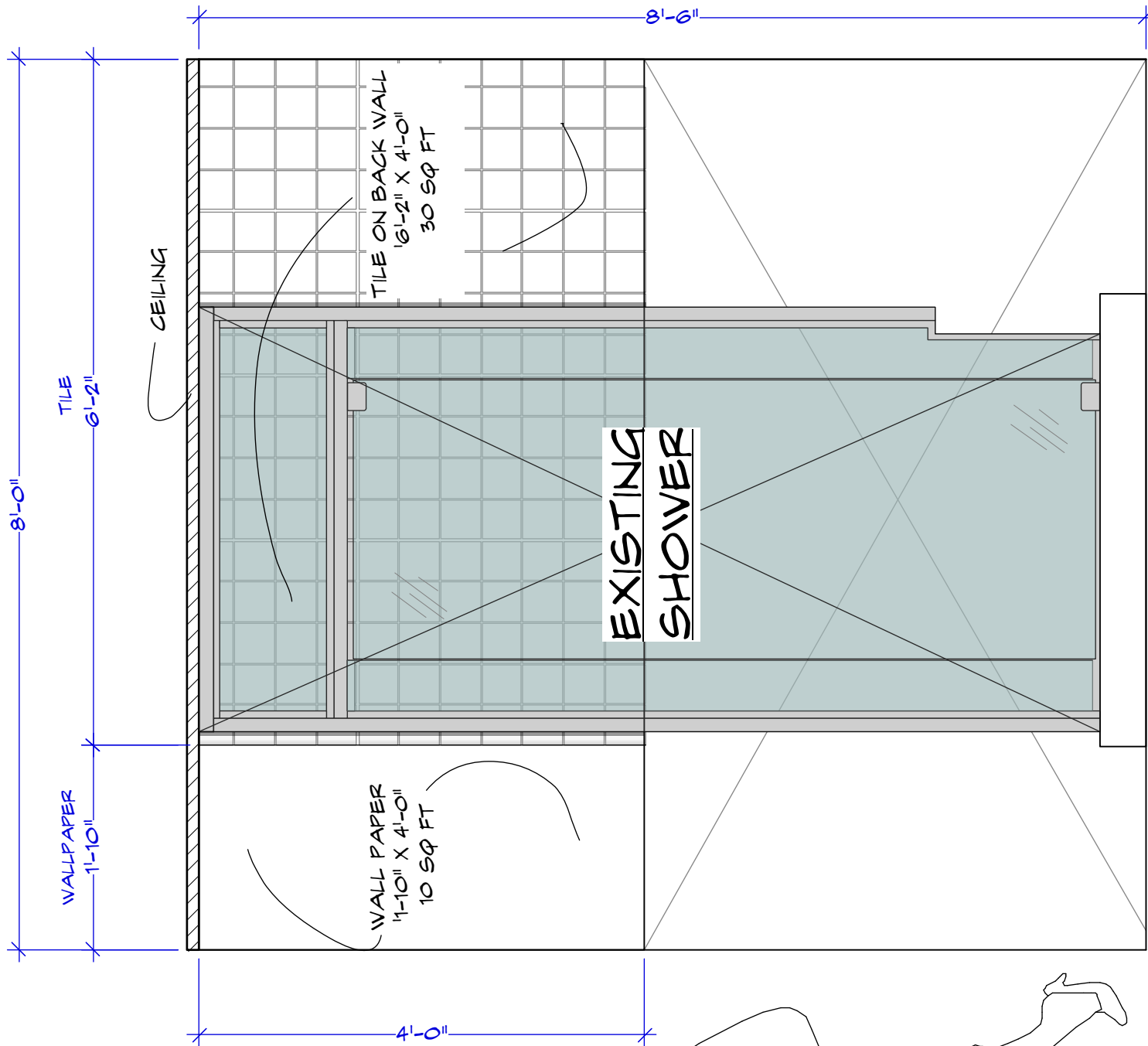
The CRL Prima Series Pivot Hinge is able to accommodate 5/16" to 3/8" (8 to 10 mm) tempered safety glass. A variety of four styles, including Wall Mount and Glass-to-Glass types, gives design flexibility. They are made of solid brass with all moving parts (pins and springs) in stainless steel. Prima Hinges are self-centering, with four springs for maximum retention strength. Some advantages of pivot type hinges include the fact that they carry the majority of the weight on the bottom, and have the ability to be inset from the wall, enabling clearance for other projections. See all Prima Series Hinges at crlhardware.com.

CAT. NO.	THICKNESS	FINISH
PPH01	5/16" (8 mm)	Brill Anodized
PPH01	5/16" (8 mm)	Brushed Nickel
PPH01	5/16" (8 mm)	Brill Gold Anodized
PPH01	5/16" (8 mm)	Oil Rubbed Bronze

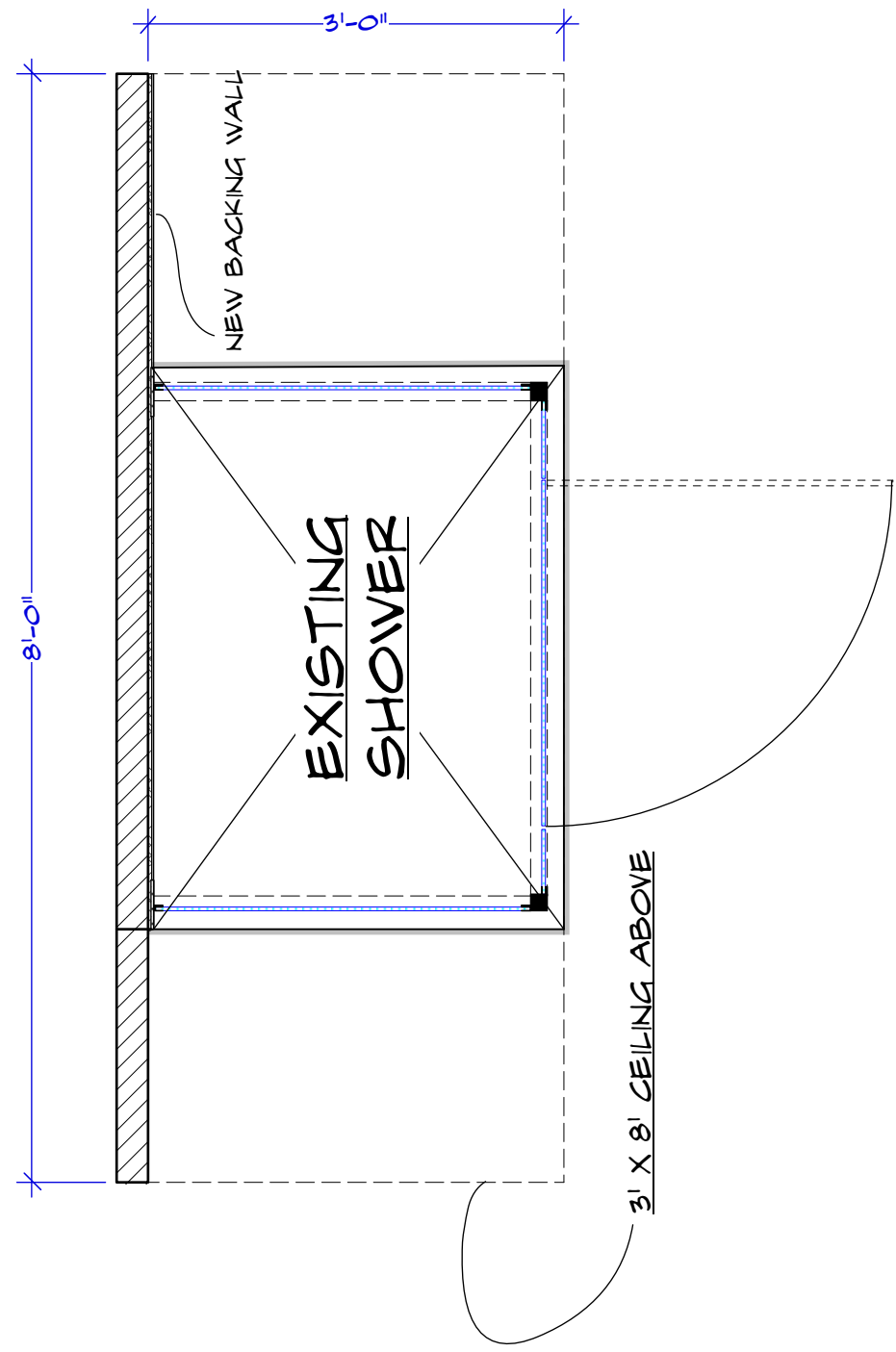
**PIVOT HINGES**

CAT. NO.	FINISH
SDK1800A	Polished Chrome
SDK1800C	Satin Chrome (Matte)
SDK1800S	Brushed Satin Chrome
SDK1800N	Brushed Nickel
SDK1800P	Polished Nickel
SDK1800SN	Satin Nickel
SDK1800BN	Antique Brushed Nickel
SDK1800R	Polished Brass
SDK1800S	Satin Brass
SDK1800BR	Antique Brass
SDK1800UR	Ultra Brass
SDK1800RB	Oil Rubbed Bronze
SDK1800AB	Antique Brass
SDK1800BC	Antique Brushed Copper
SDK1800M	Gun Metal





**A** GRETEL'S SHOWER INSERT FRONT VIEW  
SCALE: 3/4" = 1'-0"



**B** GRETEL'S SHOWER INSERT PLAN VIEW  
SCALE: 3/4" = 1'-0"

**RELEASED 6/27/2019**

	PROD. DESIGNER: CURT BEECH ART DIRECTOR: MARCI MUDD	DRAWING: SHOWER INSERT	SHOOT DATE: TBD	SET #: 113	DATE DRAWN: 6/27/2019	<b>GRETAL'S SHOWER INSERT</b>
	DRAWING BY: M. FAHRER	LOCATION: STEINER STAGE	SCALE: 3/4"=1'-0"	SCENE #: TBD	REVISED: XX/XX/2019	